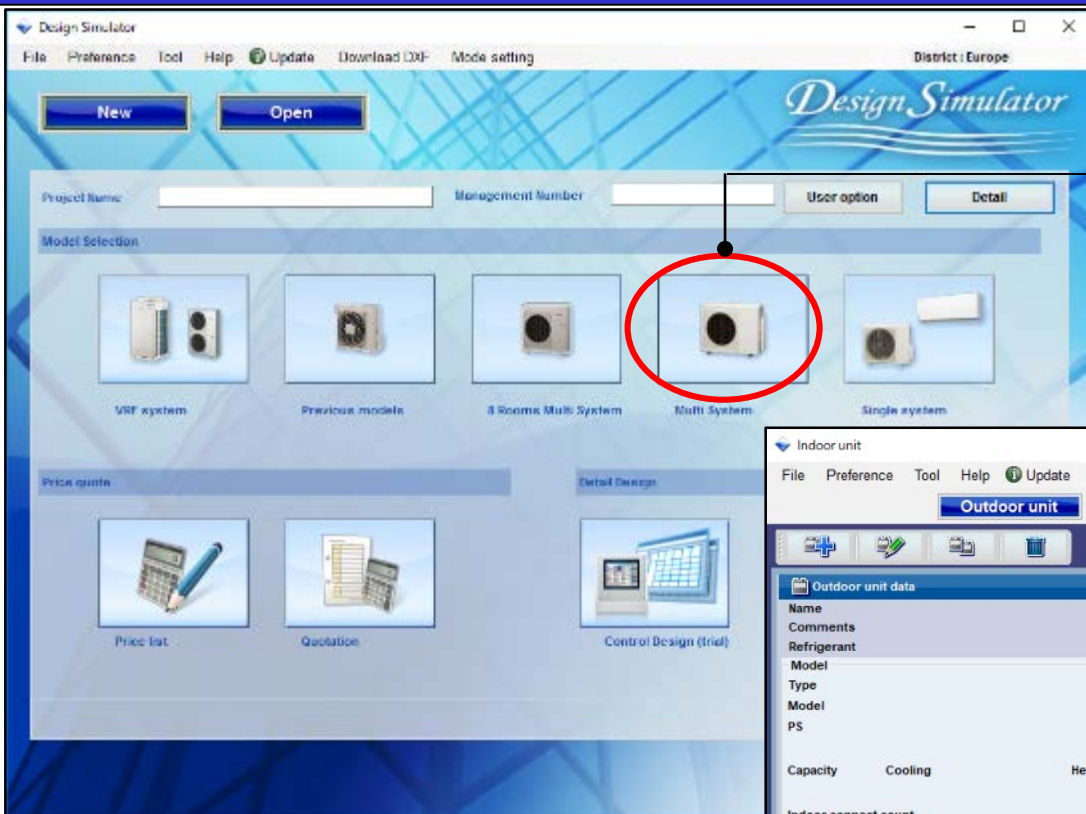
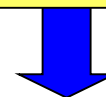


# Početna podešavanja

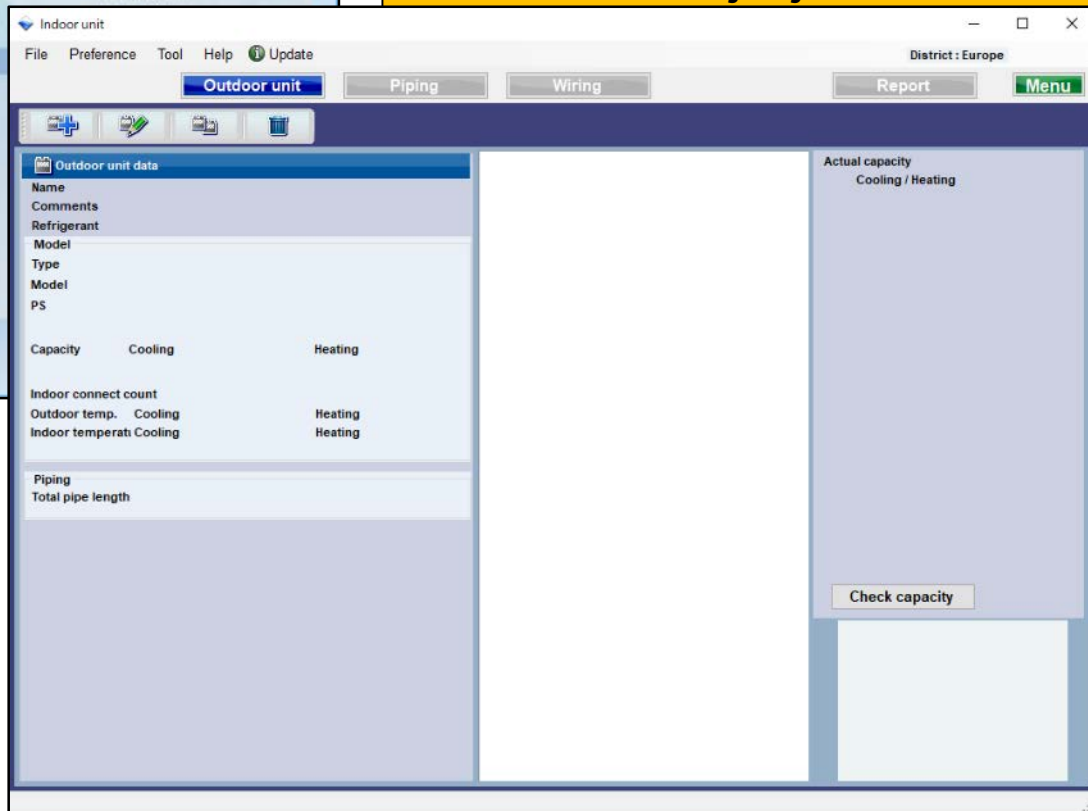
## Design Simulator



Izaberi "Multi Sistem"

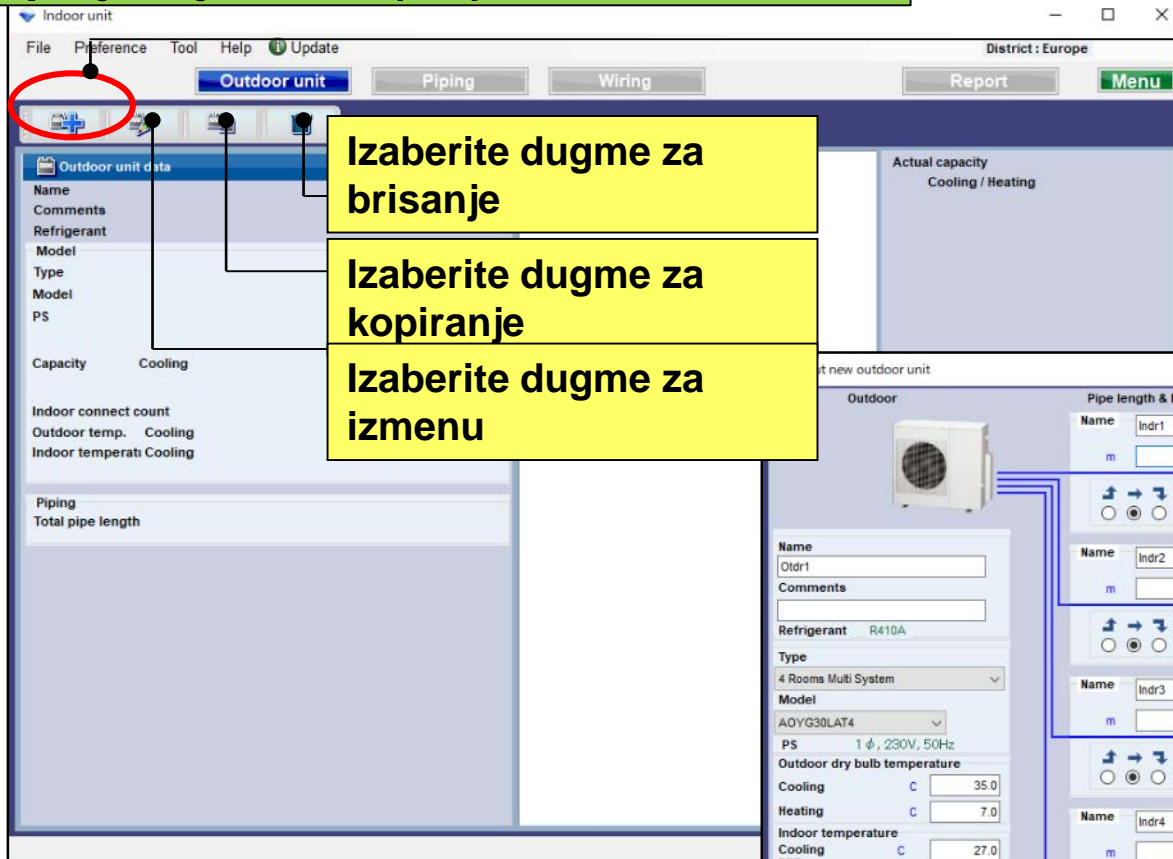


početni ekran za podešavanje  
unutrašnjih jedinica



# Podešavanje unutrašnjih i spoljnih jedinica *Design Simulator*

## Metod podešavanja unutrašnjih i spoljnih jedinica (1/4)



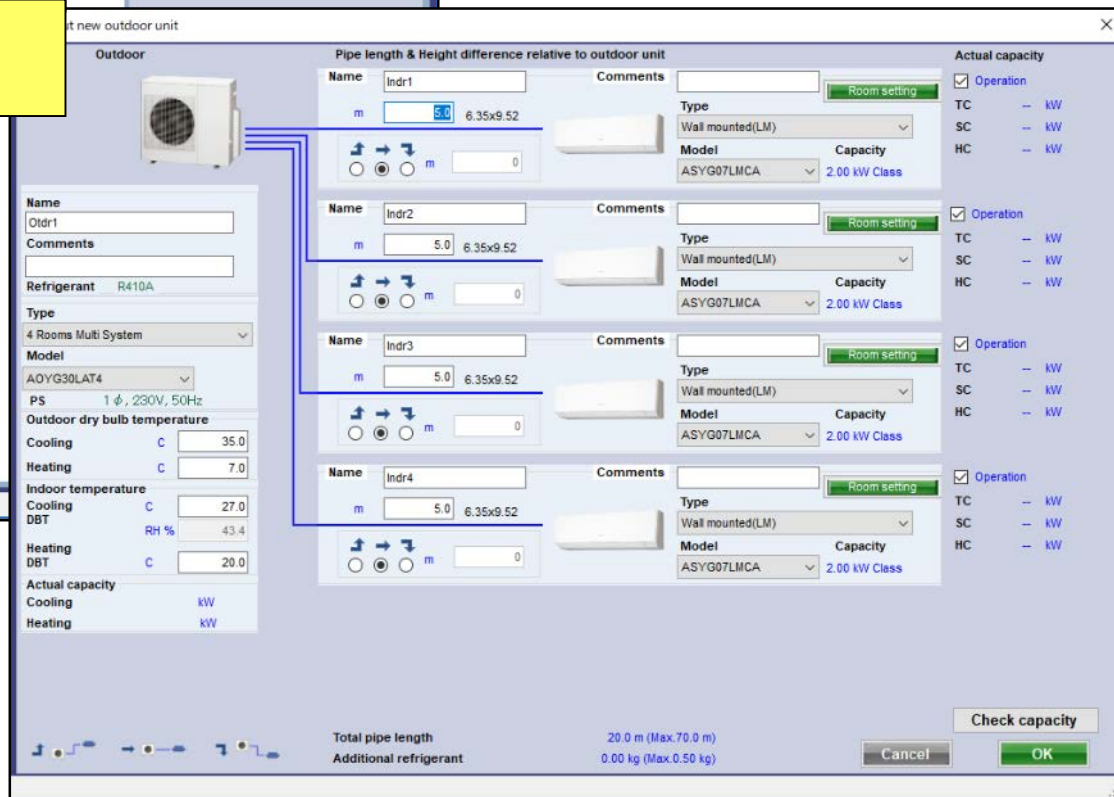
Izaberite dugme za brisanje

Izaberite dugme za kopiranje

Izaberite dugme za izmenu

Izaberite "dodaj novu unutrašnju jedinicu"

Otvorite početni ekran za odabir nove spoljne jedinice



# Podešavanje unutrašnjih i spoljnih jedinica *Design Simulator*

## Metod podešavanja unutrašnjih i spoljnih jedinica (2/4)

Izračunajte kapacitet odabranih unutrašnjih jedinica

Modify outdoor unit

Outdoor

Pipe length & Height difference relative to outdoor unit

Name: Indr1

Comments:

Type: Wall mounted(LM)

Model: ASYG07LMCA

Capacity: 2.00 kW Class

Room setting

Refrigerant: R410A

Type: 4 Rooms Multi System

Model: AOYG30LAT4

PS: 1  $\phi$ , 230V, 50Hz

Outdoor dry bulb temperature

Cooling: 35.0

Heating: 7.0

Indoor temperature

Cooling DBT: 27.0

Heating DBT: 20.0

Actual capacity

Cooling: 7.50 kW

Heating: 8.80 kW

Total pipe length: 20.0 m (Max.70.0 m)

Additional refrigerant: 0.00 kg (Max.0.50 kg)

Cancel

OK

Check capacity

Prikaz imena preferenci

Izaberite vrstu

Izaberite model spoljne jedinice

Ulazni uslovi za dizajn.  
Ukoliko se ne odlucite za pocetne dizajn uslove, podrazumevani ulazni parametri ce biti "27C,, na hladjenju i "20C,, na grejanju.

Izračunajte i prikažite stvarni kapacitet

Actual capacity

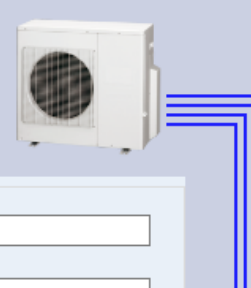
<input checked="" type="checkbox"/> Operation	
TC	2.50 kW
SC	1.81 kW
HC	2.93 kW
<input checked="" type="checkbox"/> Operation	
TC	2.50 kW
SC	1.81 kW
HC	2.93 kW
<input type="checkbox"/> Operation	
TC	-- kW
SC	-- kW
HC	-- kW
<input checked="" type="checkbox"/> Operation	
TC	2.50 kW
SC	1.81 kW
HC	2.93 kW

# Podešavanje unutrašnjih i spoljnih jedinica *Design Simulator*

## Metod podešavanja unutrašnjih i spoljnih jedinica(3/4)

Modify outdoor unit

Outdoor



**Pipe length & Height difference relative to outdoor unit**

Name	Indr1	Indr2	Indr3	Indr4
Type	Wall mounted(LM)	Wall mounted(LM)	Wall mounted(LM)	Wall mounted(LM)
Model	ASYG07LMCA	ASYG07LMCA	ASYG07LMCA	ASYG07LMCA
Capacity	2.00 kW Class	2.00 kW Class	2.00 kW Class	2.00 kW Class

**Room setting**

**Actual capacity**

TC	SC	HC
2.50 kW	1.81 kW	2.93 kW

**Check capacity**

**Total pipe length** 20.0 m (Max.70.0 m)  
**Additional refrigerant** 0.00 kg (Max.0.50 kg)

Prikaz imena preferenci

Podešavanje prostorije

Izaberite vrstu unutrašnje jedinice

Izaberite model unutrašnje jedinice


Unesite vrednost "stvarne dužine cevi" i "visinske razlike"  
Izaberite položaj spoljne jedinice u odnosu na unutrašnju jedinicu

# Podešavanje unutrašnjih i spoljnih jedinica *Design Simulator*

## Multi sistem

Input new outdoor unit

Outdoor



Name: Otdr1  
Comments:  
Refrigerant: R410A  
Type: 4 Rooms Multi System  
Model:

Pipe length & Height difference relative to outdoor unit

Name	Comments	Type	Model	Capacity
Indr1		Wall mounted(LM)	ASYG07LMCA	2.00 kW Class
Indr2		Wall mounted(LM)	ASYG07LMCA	2.00 kW Class
Indr3		Wall mounted(LM)	ASYG07LMCA	2.00 kW Class

Actual capacity

Operation	TC	SC	HC
<input checked="" type="checkbox"/>	-- kW	-- kW	-- kW

# Podešavanje unutrašnjih i spoljnih jedinica *Design Simulator*

## Dužina cevi • Unos visinske razlike(Multi sistem)


Izaberite vrstu i model spoljne jedinice

Izaberite vrstu i model unutrašnje jedinice

Unesite dužinu cevi

Modify outdoor unit

Outdoor



**Indoor Unit Configuration (Indr1 to Indr4):**

- Name: Indr1, Indr2, Indr3, Indr4
- Comments: (empty)
- Type: Wall mounted(LM)
- Model: ASYG07LMCA
- Capacity: 2.00 kW Class
- Room setting: (empty)
- Operation: (checked)

**Outdoor Unit Configuration:**

- Name: Otdr1
- Comments: (empty)
- Refrigerant: R410A
- Type: 4 Rooms Multi System
- Model: AOYG30LAT4
- PS: 1 φ, 230V, 50Hz
- Outdoor dry bulb temperature: (empty)
- Cooling: C 35.0
- Heating: C 7.0
- Indoor temperature: Cooling DBT C 27.0, RH % 43.4; Heating DBT C 20.0
- Actual capacity: Cooling 7.50 kW, Heating 8.80 kW

**Actual capacity table:**

Operation	TC	SC	HC
Operation	2.50 kW	1.81 kW	2.93 kW
Operation	2.50 kW	1.81 kW	2.93 kW
Operation	2.50 kW	1.81 kW	2.93 kW
Operation	2.50 kW	1.81 kW	2.93 kW

**Check capacity**

Total pipe length: 20.0 m (Max.70.0 m)  
Additional refrigerant: 0.00 kg (Max.0.50 kg)

Cancel OK

# Podešavanje unutrašnjih i spoljnih jedinica *Design Simulator*

## Simultani multi sistem

Input new outdoor unit

Outdoor

9.52x15.88 UTP-SX354

1.0 m

Pipe length & Height difference relative to outdoor unit

Name	Comments	Type	Model	Room setting
Indr1		Compact Cassette(3Phase Triple)	AUYG18LVLB	<input type="checkbox"/> Operation
Indr2		Compact Cassette(3Phase Triple)	AUYG18LVLB	<input type="checkbox"/> Operation
Indr3				<input type="checkbox"/> Operation

Actual capacity

TC	--	kW
SC	--	kW
HC	--	kW

Name: Otdr1

Comments:

Refrigerant: R410A

Type: Simultaneous multi 3 phase Triple type

Model:



# Podešavanje unutrašnjih i spoljnih jedinica *Design Simulator*

## Dužina cevi • Unos visinske razlike(Simultani multi sistem) (1/5)

Input new outdoor unit

Outdoor

UTP-SX354

9.52x15.88

1.0

Pipe length & Height difference relative to outdoor unit

Name Indr1

Comments

m 5.0 6.35x12.70

Type Compact Cassette(3Phase Triple)

Model AUYG18LVLB

Room setting

Name Indr2

Comments

m 5.0 6.35x12.70

Type Compact Cassette(3Phase Triple)

Model AUYG18LVLB

Room setting

Name Otdr1

Comments

Refrigerant R410A

Type Simultaneous multi 3 phase Triple type

Model AOYG54LATT

PS 3N, 400V, 50Hz

Outdoor dry bulb temperature

Cooling C 35.0

Heating C 7.0

Indoor temperature

Cooling C 27.0

DBT RH % 43.4

Heating DBT C 20.0

Actual capacity

Cooling kW

Heating kW

Pipe size change 9.52(3/8)x15.88(5/8)\*\*

Input pipe length

Additional refrigerant 0.00 kg (Max.2.25 kg)

Check capacity

Cancel OK

Izaberite vrstu (Simultani multi)

Izmenite veličinu cevi

Unesite dužinu cevi



# Podešavanje unutrašnjih i spoljnih jedinica *Design Simulator*

## Dužina cevi • Unos visinske razlike(Simultani multi sistem) (2/5)

**Izaberite vrstu i model spoljne jedinice**

**Izaberite vrstu i model unutrašnje jedinice**

**Izaberite dimenziju cevi**

**Unesite dužinu cevi**

**Dužina cevi i visinska razlika**  
Simultanog multi sistema se unose pomoću dugmeta za unos dužine cevi

**Input new outdoor unit**

**Outdoor**

UTP-SX354

**Pipe length & Height difference relative to outdoor unit**

**Name** Indr1

m 5.0 6.35x12.70

**Name** Indr2

m 5.0 6.35x12.70

**Name** Indr3

m 5.0 6.35x12.70

**Type** Compact Cassette(3Phase Triple)

**Model** AUYG18LVLB

**Refrigerant** R410A

**Type** Simultaneous multi 3 phase Triple type

**Model** AOYG54LATT

**PS** 3N, 400V, 50Hz

**Outdoor dry bulb temperature**

**Cooling** C 35.0

**Heating** C 7.0

**Indoor temperature**

**Cooling** C 27.0

**DBT** RH % 43.4

**Heating** DBT C 20.0

**Actual capacity**

**Cooling** kW

**Heating** kW

**Pipe size change**

9.52(3/8)x15.88(5/8)\*\*

**Input pipe length**

**Total pipe length** 16.0 m (Max.75.0 m)

**Additional refrigerant** 0.00 kg (Max.2.25 kg)

**Check capacity**

**Cancel** **OK**

# Podešavanje unutrašnjih i spoljnih jedinica *Design Simulator*

## Dužina cevi • Unos visinske razlike(Simultani multi sistem) (3/5)

Input new outdoor unit

Outdoor

9.52x15.88  
UTP-SX354

Name  
Oldr1

Comments

Refrigerant R410A

Type  
Simultaneous multi 3 phase Triple type

Model  
AOYG54LATT

PS 3N, 400V, 50Hz

Outdoor dry bulb temperature

Cooling C 35.0

Heating C 7.0

Indoor temperature

Cooling DBT C 27.0

Heating DBT C 20.0

Actual capacity

Cooling kW

Heating kW

Pipe size change  
9.52(3/8)x15.88(5/8)

Input pipe length

Total pipe length

Additional refrigerant

Pipe length & Height difference relative to outdoor unit

Name	Comments	Type	Model	HC	kW
Indr1		Compact Cassette(3Phase Triple)	AUYG18LVLB		
Indr2		Compact Cassette(3Phase Triple)	AUYG18LVLB		
Indr3		Compact Cassette(3Phase Triple)	AUYG18LVLB		

Izaberite "Unos dužine cevi"

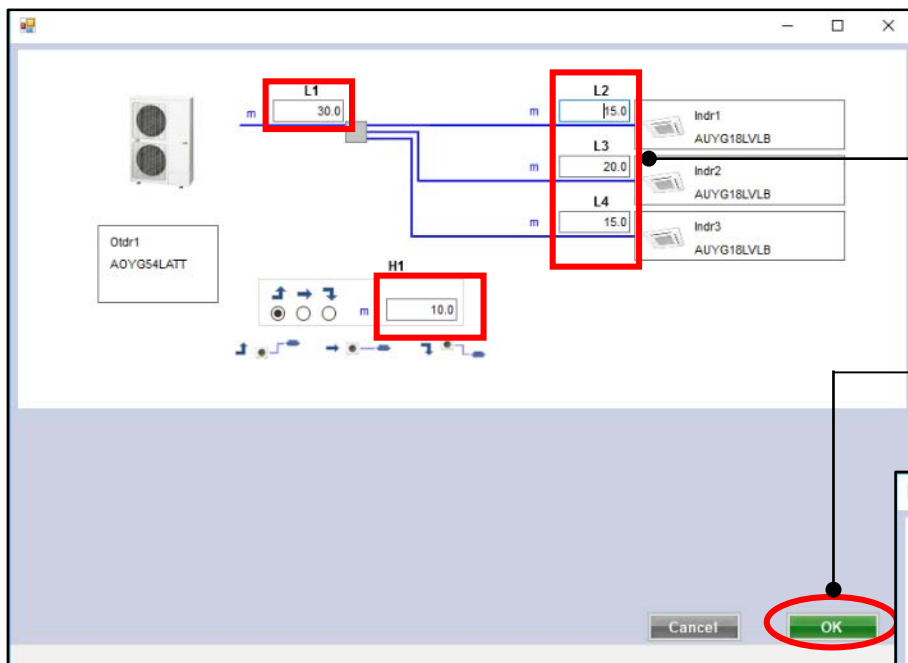
Otvorite ekran za izbor unosa dužine cevi

Diagram showing the outdoor unit (Otdr1 AOYG54LATT) connected to three indoor units (Indr1, Indr2, Indr3) via a multi-phase system. The diagram includes labels for L1, L2, L3, L4, and H1, indicating the length and height difference of the pipes. The indoor units are labeled as AUYG18LVLB.

Cancel OK

# Podešavanje unutrašnjih i spoljnih jedinica *Design Simulator*

## Dužina cevi • Unos visinske razlike (Simultani multi sistem) (4/5)

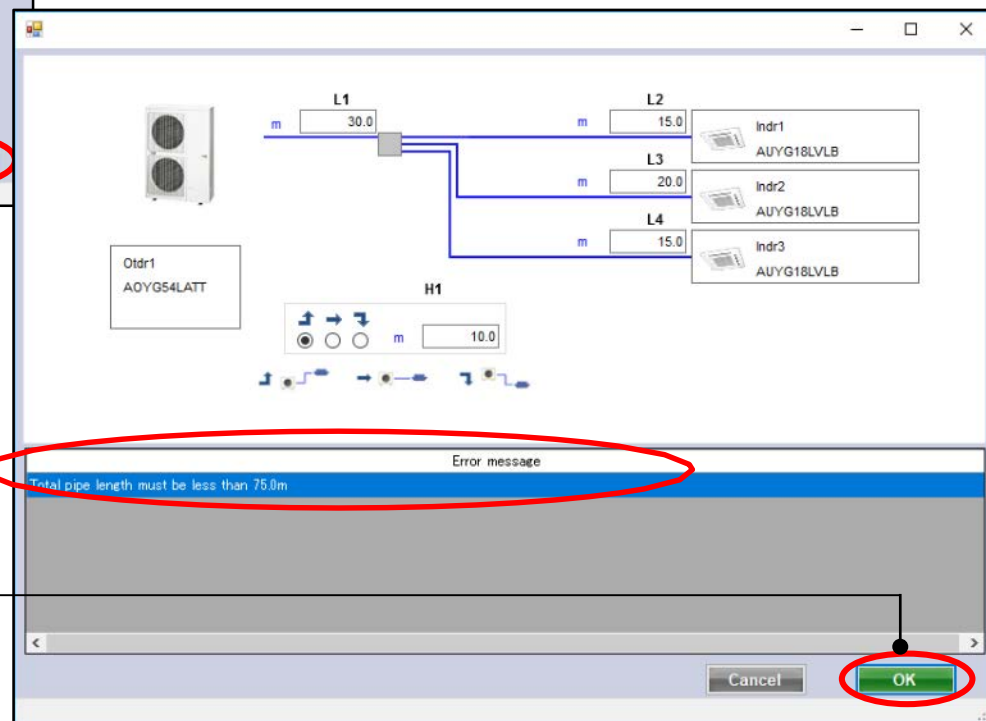


Unesite dužinu cevi

Nakon registracije svih dužina  
izaberite "OK"

Upozorenje daje informacije  
o greškama kada informacija  
nije uneta ili prelazi  
ograničenja dužine cevi

Ponovite ponovo, a zatim  
izaberite "OK"



# Podešavanje unutrašnjih i spoljnih jedinica *Design Simulator*

## Dužina cevi • Unos visinske razlike(Simultani multi sistem) (5/5)

Modify outdoor unit

Outdoor

30.0 m

9.52x15.88 UTP-SX354

Name: Otdr1  
Comments:  
Refrigerant: R410A  
Type: Simultaneous multi 3 phase Triple type  
Model: AOYG54LATT  
PS: 3N, 400V, 50Hz  
Outdoor dry bulb temperature:  
Cooling: 35.0 C  
Heating: 7.0 C  
Indoor temperature:  
Cooling DBT: 27.0 C  
RH %: 43.4  
Heating DBT: 20.0 C  
Actual capacity:  
Cooling: kW  
Heating: kW  
Pipe size change: 9.52(3/8)x15.88(5/8)\*\*  
Input pipe length

Pipe length & Height difference relative to outdoor unit

Name	Comments	Type	Model
Indr1		Compact Cassette(3Phase Triple)	AUYG18LVLB
Indr2		Compact Cassette(3Phase Triple)	AUYG18LVLB
Indr3		Compact Cassette(3Phase Triple)	AUYG18LVLB

Actual capacity

Operation	TC	SC	HC
Operation	— kW	— kW	— kW
Operation	— kW	— kW	— kW
Operation	— kW	— kW	— kW

Unos dužine cevi je podešen

Prikazuju se ukupna dužina cevi i količina za dopunu freona

Total pipe length: 75.0 m (Max.75.0 m)  
Additional refrigerant: 1.35 kg (Max.2.25 kg)

Check capacity

Cancel OK

# Podešavanje unutrašnjih i spoljnih jedinica *Design Simulator*

## Metod podešavanja unutrašnjih i spoljnih jedinica (4/4)

Outdoor unit configuration:

- Name: Otdr1
- Comments:
- Refrigerant: R410A
- Type: 4 Rooms Multi System
- Model: AOYG30LAT4
- PS: 1p, 230V, 50Hz
- Outdoor dry bulb temperature: 35.0
- Heating: 7.0
- Indoor temperature: 27.0
- Cooling DBT: 43.4
- Heating DBT: 20.0
- Actual capacity: 7.50 kW (Cooling), 8.80 kW (Heating)

Pipe length & Height difference relative to outdoor unit:

Name	Comments	Type	Model	Capacity	Room setting
Indr1		Room setting	ASYG07LMCA	2.00 kW Class	<input type="button" value="Room setting"/>
Indr2		Room setting	ASYG07LMCA	2.00 kW Class	<input type="button" value="Room setting"/>
Indr3		Room setting	ASYG07LMCA	2.00 kW Class	<input type="button" value="Room setting"/>
Indr4		Room setting	ASYG07LMCA	2.00 kW Class	<input type="button" value="Room setting"/>

Actual capacity:

TC	SC	HC
2.50 kW	1.81 kW	2.93 kW

Check capacity:

Izaberite “OK”

Prkaz ekrana sa osnovnim podacima o unutrašnjoj i spolnoj jedinici

Indoor unit configuration:

- Name: Otdr1
- Comments:
- Refrigerant: R410A
- Type: 4 Rooms Multi System
- Model: AOYG30LAT4
- PS: 1p, 230V, 50Hz
- Capacity: Cooling 8.00 kW, Heating 9.60 kW
- Indoor connect count: 4
- Outdoor temp. Cooling: 35.0C, Heating: 7.0C
- Indoor temperature Cooling: 27.0C, Heating: 20.0C
- Piping: Total pipe length 20.0m

Report section:

Actual capacity

Indr1	Indr2	Indr3	Indr4
ASYG07LMCA	ASYG07LMCA	ASYG07LMCA	ASYG07LMCA
TC	TC	TC	TC
SC	SC	SC	SC
HC	HC	HC	HC

Check capacity:

# Podešavanje unutrašnjih i spoljnih jedinica *Design Simulator*

## Funkcija podešavanja sobe(1/3)

Izaberi “Podešavanje sobe”

Otvori ekran za podešavanje sobe

Izaberi podešavanje sprata

Otvori ekran za podešavanje sprata

Dodaj ili ukloni sprat

Možete dodati drugi sprat

Dodaj sprat

Ukloni sprat

Outdoor

Pipe length & height difference relative to outdoor unit

Name Indr1

Comments

Room setting

Type Wall mounted(LM)

Model ASYG07LMCA

Capacity 2.00 kW Class

Actual capacity

Operation

2.20 kW

SC 0.00 kW

HC 2.70 kW

Name Indr2

Comments

Refrigerant R410A

Type 2 Rooms Multi System

Room setting

Floor type Single Floor

Floor Floor1

Floor setting

Select Floor Room Length (m) Width (m) Height (m) Rq TC (kW) Rq SC (kW) Rq HC (kW) Tmp C (DBT) Tmp C (RH %) Tmp H (C)

1 Floor1

2 Floor2

Floor setting

Floor type Multi Floor

Floor Floor2

Floor setting

Item setting

Select Floor Room Length (m) Width (m) Height (m) Rq TC (kW) Rq SC (kW) Rq HC (kW) Tmp C (DBT) Tmp C (RH %) Tmp H (C)

Add floor

Remove

Cancel

OK



# Podešavanje unutrašnjih i spoljnih jedinica *Design Simulator*

## Funkcija podešavanja sobe(2/3)

izaberi “podešavanje stavke”

otvori ekran za podešavanje po stavkama

Ekran sa prikazom stavki može da se podesi

Proverite stavke koje želite da prikazete

Obeležene stavke su prikazane

Prikaz stavki po jedinici

Prikaz stavki

Jedino se može menjati stavka zapremine vazduha u prostoru/broj ljudi

Stavke od 11-18 mogu biti postavljene proizvoljno od korisnika

	Item	Unit	Use
1	Length	m	<input checked="" type="checkbox"/>
2	Width	m	<input checked="" type="checkbox"/>
3	Height	m	<input checked="" type="checkbox"/>
4	Rq TC	kW	<input checked="" type="checkbox"/>
5	Rq SC	kW	<input checked="" type="checkbox"/>
6	Rq HC	kW	<input checked="" type="checkbox"/>
7	Tmp C	DBT/RH %	<input checked="" type="checkbox"/>
8	Tmp C	DBT/RH %	<input checked="" type="checkbox"/>
9	Tmp H	C	<input checked="" type="checkbox"/>
10	Air space / person	m3	<input checked="" type="checkbox"/>
11	person	person	<input checked="" type="checkbox"/>
12	Remarks2		<input type="checkbox"/>
13	Remark		
14	Remark		
15	Remark		
16	Remark		
17	Remark		
18	Remark		

13 Remark

14 Remark

15 Remark

16 Remark

17 Remark

18 Remark

Room setting

Floor type

Multi Floor

Floor

Floor2

Floor setting

Item setting

Item 10-18 :

Select	Floor	Room	Length (m)	Width (m)	Height (m)	Rq TC (kW)	Rq SC (kW)	Rq HC (kW)	Tmp C (DBT)	Tmp C (RH %)	Tmp H (C)	Air P
1	<input type="checkbox"/>	Floor2	2F_Conference1	20.0	20.0	8.0	20	10	30	27	43.4	20



# Podešavanje unutrašnjih i spoljnih jedinica *Design Simulator*

## Funkcija podešavanja sobe (3/3)

izaberi “dodaj prostoriju”

Dodaj prostoriju

Odabir unutrašnjih jedinica za prostoriju

Izaberi drugi sprat

Dodaj prostoriju za sprat

Ukloni prostoriju sa sprata

Dodaj prostoriju za drugi sprat

Odrediti sve vrednosti za sobu

Proverite i odredite unutrašnju  
jedinicu za sobu

